



CONNECT
LOGISTICS



Connect Logistics (Pvt.) Ltd.



Plot # 73 B,C,D, Main Mauripir Road,
Hawksbay Phase 2, Karachi



Tel: +92 213 2569 977 (Ext 229)



info@connectlogistics.pk



www.connectlogistics.pk



CONNECT
LOGISTICS

Services Offered



Ambient
Warehousing



Temperature
Controlled
Warehousing



Value
Added Services



Road
Transportation



CONNECT
LOGISTICS

Introduction to Connect Logistics

ABOUT US:

At Connect Logistics we are focused on delivering operational excellence to our customers, each and every day. By uniting and working together, we focus on growing our business by offering outstanding warehouse services and developing our business to support theirs. At every link in the logistics domain, we make business flow.



VISION STATEMENT:

To create new value, excite and delight our customers.

MISSION STATEMENT:

Committed to deliver the highest quality of service and customized solutions for Connect's valued business partners as fuel to boost their growth

Provide superior transportation and storage services that meet or exceed our customers' expectations. We, as an innovative leader in our industry, will promote safety, dependability, efficiency, and exceptional customer service by using current best practices.

Aiming at long-term mutually beneficial relationship on the grounds of trust, integrity and delivery.



CONNECT LOGISTICS

Directors



Talib Zaki
Chief Executive Officer

Mr. Talib Zaki is the founder and CEO of Quick Food Industries (Pvt) Ltd, Glaciers (Pvt) Ltd, and Connect Logistics (Pvt) Ltd. Talib is also one of the founding member of the Cold Chain Association of Pakistan, and one of the pioneers of providing temperature-controlled storage solutions in Pakistan. He completed his education from The University of Manchester in 1996 as a textile engineer and joined the family business. In 1999, Talib established Quick Food Industries (Pvt) Ltd (QFI). Whereby he manufactured the first frozen food brand in Pakistan, Monsalwa. Leveraging his experience of managing frozen products, in 2007, Talib established the first sizeable frozen storage facility of Pakistan by the name of Glaciers. Under his leadership, Glaciers has grown to become the largest frozen storage warehouse in Pakistan. In 2012, Talib entered the ambient storage business and established Connect Logistics.



Usama Zaki
Chief Finance Officer

Mr. Usama Zaki Completed his education in Textile Management from the Textile Institute of Pakistan in 1996. Usama then joined the family business of Sanaulla Textile Mills, where he worked from 1996 to 2000. Following this he joined talib in Quick Food Industries as the Chief Financial Officer. When the group entered the warehousing business in 2007, Usama was the natural choice for CFO and took on the responsibility of managing all financial aspects as the group CFO for QFI, Glaciers and Connect. The rapid expansion of the group over the past few years has only been made possible because of Usama's fund management skills and cost cutting approach.



Moonis Hussain Hashmi
Director - Operations & BD

Mr. Moonis Hussain Hashmi is a mathematician from Lahore University of Management Sciences (LUMS). Upon completing his education in 2008, Moonis joined the supply Chain function at Unilever Pakistan Limited. In his 5 years at Unilever, Moonis Looked after transportation, cold chain management, ambient logistics and supply planning. In 2013 Moonis left Unilever to establish J&M Consultants, a consultancy firm looking to provide supply chain solutions to growing local businesses in Pakistan. In 2014, Connect Logistics acquired J&M consultants and Moonis was taken on board as Director for Business Development and Systems. In his tenure, Connect Logistics has grown by over 300% through expansion and integration of its warehousing operations, transportation and value addition in the business. Moonis has ambitious growth plans for the business and plans on establishing 250,000 pallet positions through self-owned Mega Warehouses across Pakistan with a targeted investment of over PKR 10 Billion.



Abdul Rehman
Director of Projects and Technical

Mr. Abdul Rehman holds a bachelors degree in Technology. He has over 23 years of experience in the industry. Rehman started his career in 1996 with Karam Ceramics as the Electrical In-Charge. He then spent several years in textile industries in Pakistan and Oman. In 2006, Rehman joined Glaciers as General Manager. He was the project lead for construction at Glaciers in 2007 and all subsequent expansions, including electrical, electronics, maintenance, mechanical, refrigeration, hydraulics, pneumatics, PLC systems, engineering, administration, HR, production and operations. He is currently the director for Project Management and Technical at Connect Logistics.



CONNECT
LOGISTICS

Journey of Growth





CONNECT
LOGISTICS

Existing & Planned Facilities

Connect Logistics is a dynamic and rapidly growing company providing services to a variety of local and multinational business groups. Connect provides customized ambient and temperature controlled warehousing and logistics solution in Karachi, Lahore and Multan. We are expanding our Cold Chain and Ambient Warehousing operations to the following locations

- Peshawar (Hayatabad)
- Islamabad
- Sargodha (Bhalwal)
- Faisalabad
- Vehari
- Rahim Yar Khan
- Sukkur



LEGENDS:



Existing Facility



Planned Facility



CONNECT
LOGISTICS

Existing Facilities

GLACIERS WAREHOUSE – SUNDAR INDUSTRIAL ESTATE, LAHORE



Exterior of View Glacier (Pvt.) Ltd.



Office Building



Warehouse Building

- 6,000 Ambient Pallet Positions
- 12,000 Temperature Controlled Pallet Positions (-30 C to +30 C)
- 100,000 Sq. ft Covered Area
- Total Plot Size of 6 Acre
- 24/7 Warehouse Operations
- Located at Sundar Industrial Estate
- 18 Loading / Offloading Docks with Dock Levelers
- 1st Warehouse in Pakistan to have BRC, URSA, SMETA and ISO 9001 Cetification
- Double Deep Racking supplied by Schaefer® and Dexion®
- 6 Double Deep Battery Operated Reach Trucks

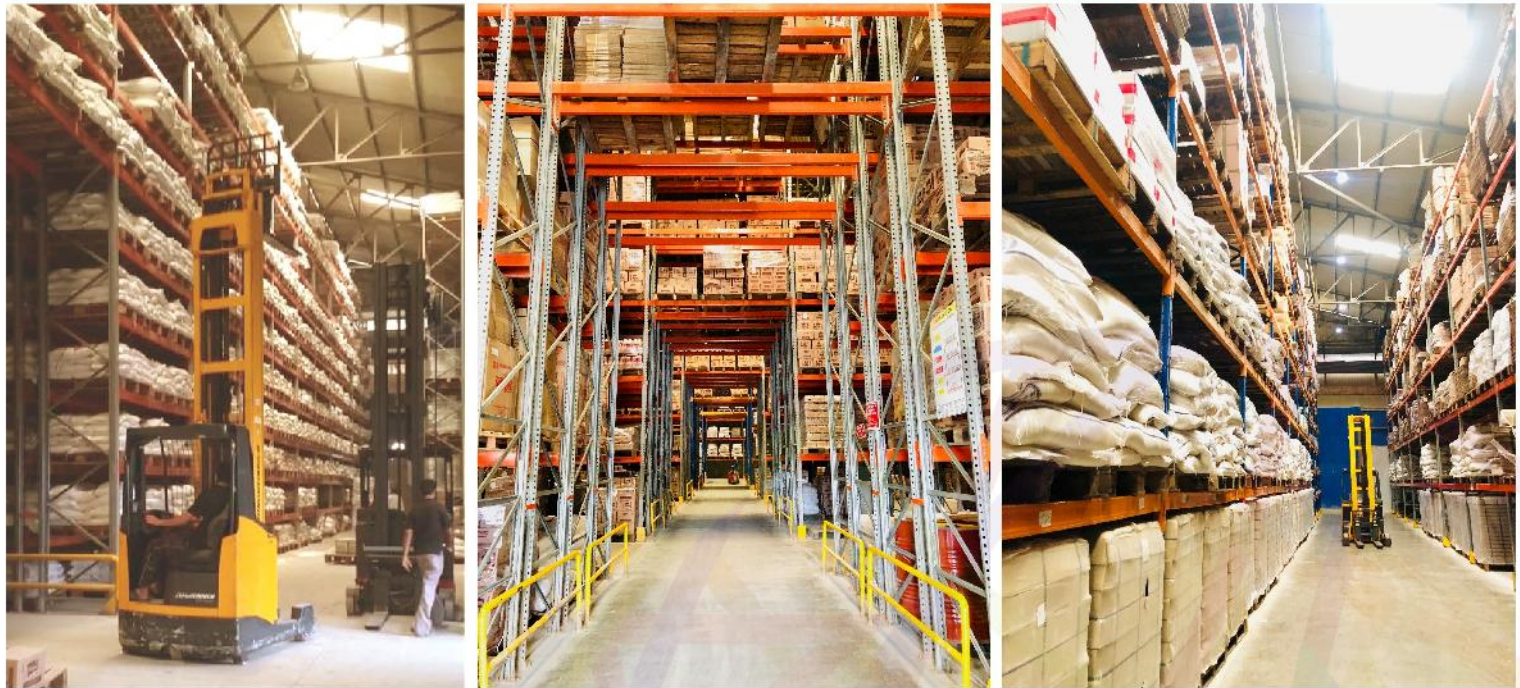




CONNECT
LOGISTICS

Existing Facilities

CONNECT LOGISTICS WAREHOUSE – S.I.T.E., KARACHI



- 14,000 Ambient Pallet Positions
- 140,000 Sq.Ft Covered Area
- Total Plot Size of 4 Acre
- 24/7 Warehouse Operations
- Located at S.I.T.E. in the Heart of Karachi
- Managing Transport Fleet of Over 40 Vehicles per day
- 12 Loading / Offloading Docks
- Selective and Double Deep Racking Supplied by Schaefer®
- 7 Double Deep Battery Operated Reach Trucks



CONNECT
LOGISTICS

Existing Facilities

CONNECT LOGISTICS WAREHOUSE – HAWKSLEY, KARACHI



Office Block (Connect Logistic, Hawksley, KHI.



Warehouse Building



VAS Area



Temperature Controlled Warehouse



Ambient Warehouse

- 18,486 Ambient Pallet Positions
- 18,500 Temperature Controlled Pallet Position
- Upto 18,700 Pallet Position are in Future Expansion
- Total Plot Size of 10 Acre
- 24/7 Warehouse Operations
- Managing Transport Fleet of Over 40 Vehicles of per day
- 26 Loading / Offloading Docks
- Selective and Double Deep Racking Supplied by Schaefer®
- 7 Double Deep Battery Operated Reach Trucks



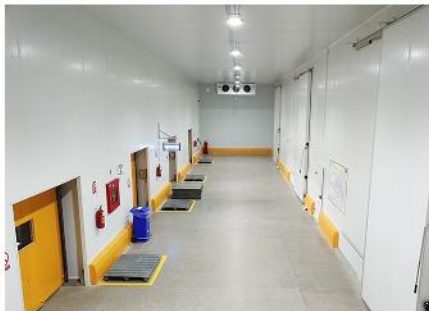
CONNECT
LOGISTICS

Existing Facilities

GLACIERS WAREHOUSE – GOPAL PUR, MULTAN



Warehouse Building



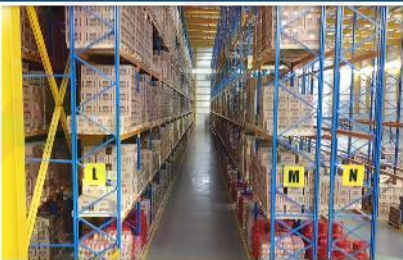
Temperature Controlled Warehouse



Office Building



Ambient Warehouse



- 5,500 Ambient Pallet Positions
- 7,500 Temperature Controlled Pallet Position
- Upto 6,700 Pallet Position are in Future Expansion
- Total Plot Size of 4 Acre
- 24/7 Warehouse Operations
- Managing Transport Fleet of Over 40 Vehicles of per day
- 12 Loading / Offloading Docks
- Selective and Double Deep Racking Supplied by Schaefer®
- 7 Double Deep Battery Operated Reach Trucks



CONNECT
LOGISTICS

Connect Mega Warehouses

As part of our vision 2020, we plan on constructing State of the Art purpose built(Ambient + Temperature Controlled) Warehouse in Karachi, Lahore, Multan & Islamabad

Key Feature

- Up to 40,000 Ambient & Temp. Controlled Pallet Position
- European Racking
- Up to 40 Docks with Dock Levelers and Shelters
- Antimicrobial Floor Coating
- Prefabricated Steel Structure
- Battery Operated MHE's
- Backup Power Generation
- PLC Controlled Refrigeration with Backup Compressors
- Fire Safety Systems
- Integrated Pest Management
- Air Curtains
- Live CCTV Monitoring at all Facilities

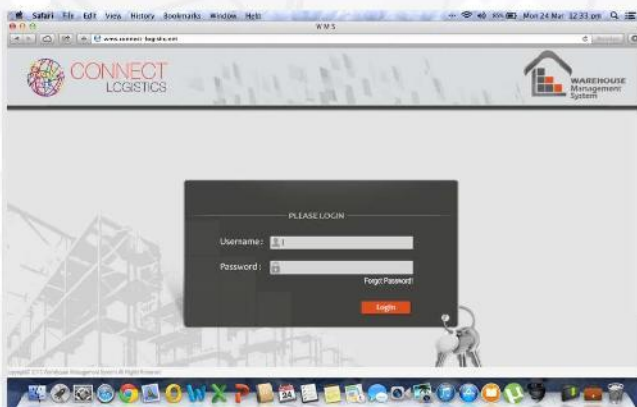




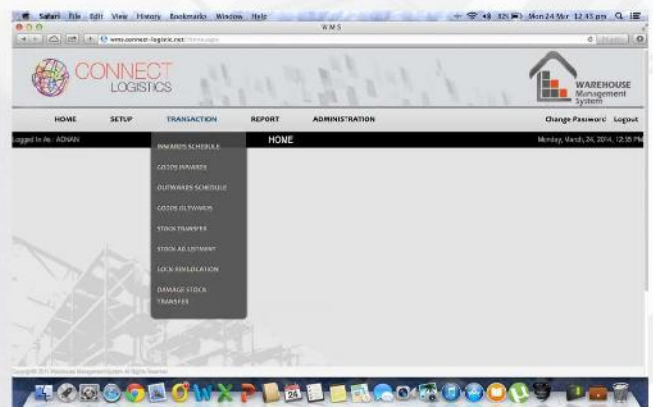
CONNECT LOGISTICS

Warehouse Management System

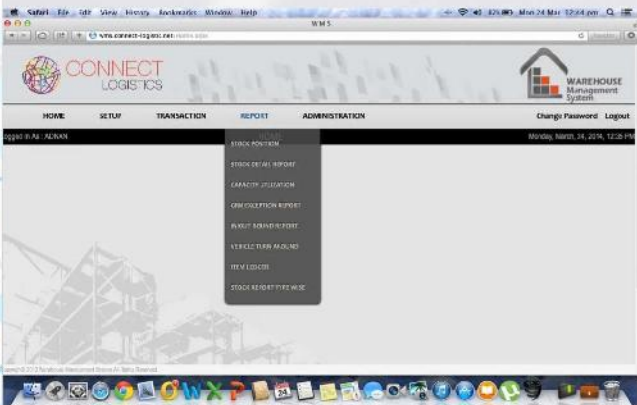
Based in the specific needs of our customers and the desire to exceed our customers service level expectations, we have developed a customer made in-house warehouse management software (SQL Server based on web 2.0). The software has been designed to be modular, allowing us to provide custom dashboards to each one of our individual clients, as well as support integration with customers ERP.



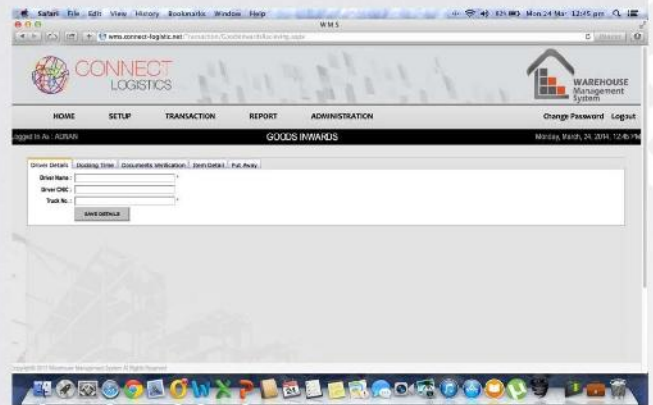
Login Screen



Transactions Menu



Reports Menu



Goods Receiving Menu





CONNECT LOGISTICS

Valued Customers

Connect logistics clientele includes several multinational and local organizations, each with their own diversified needs and unique challenges. Our experience in the industry allows us to offer customized solutions to cater to the specific needs of our clients.



Frozen and Ambient Storage Since 2006



Frozen Storage Since 2006



Frozen Storage Since 2010

Frozen Storage Since 2013



Frozen Storage Since 2006



Frozen Storage Since 2016

Chilled Storage Since 2018



Chilled Storage Since 2015

Chilled Storage Since 2015



Ambient Storage Since 2015

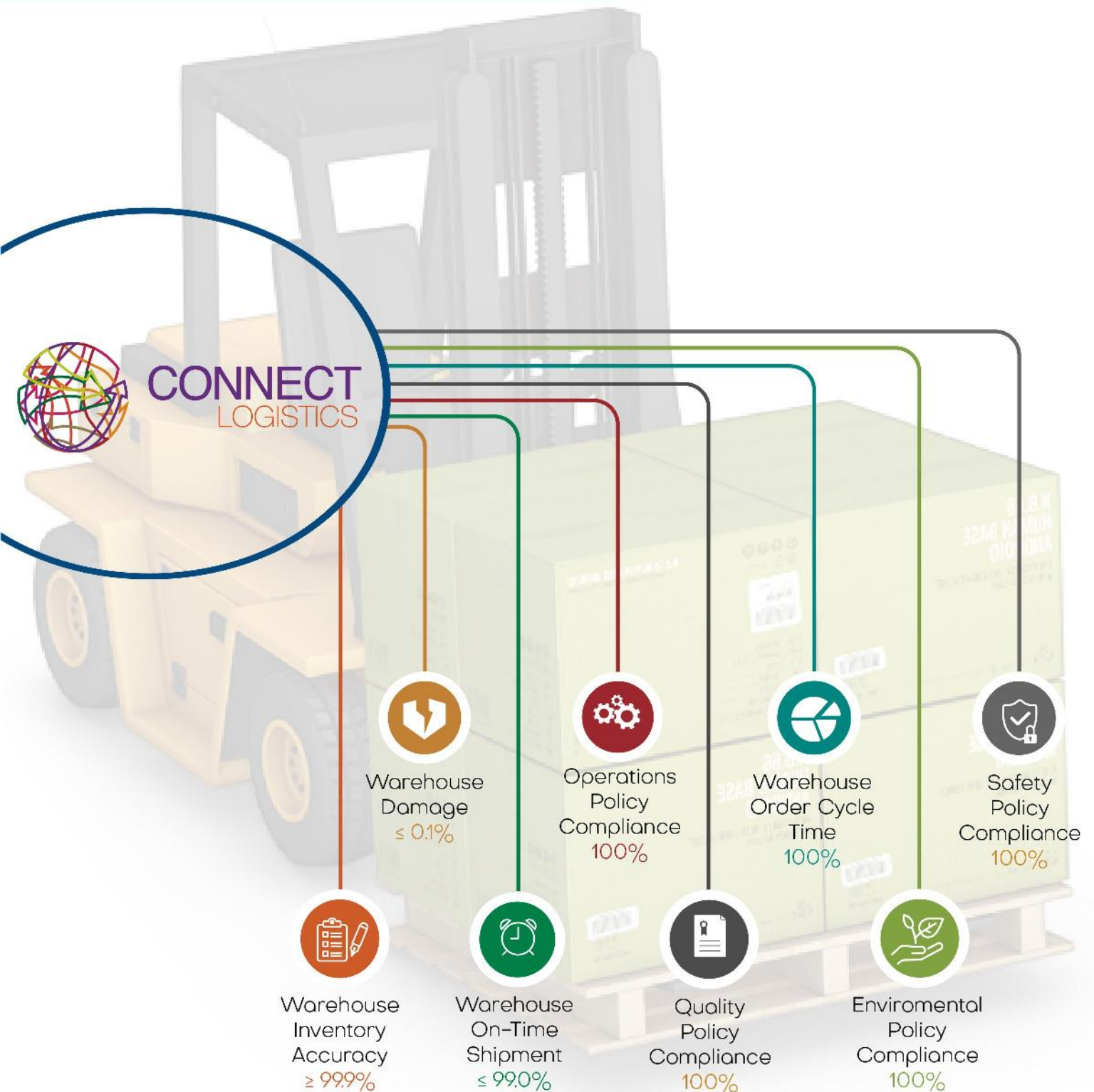


Ambient Storage Since 2014



CONNECT
LOGISTICS

Deliverables





CONNECT
LOGISTICS

Contact Us

We look forward to hearing from you for any business requirements, which your organization may have. We commit ourselves to providing industry leading service at highly competitive rates.

Kind regards,

Moonis Hashmi
Director – Business Development & Systems
Moonis@connectlogistics.pk
+92(333)0444212

Thank You



Plot # 73 B,C,D, Main Mauripir Road,
Hawksbay Phase 2, Karachi



info@connectlogistics.pk



Tel: +92 213 2569 977 (Ext 229)



www.connectlogistics.pk